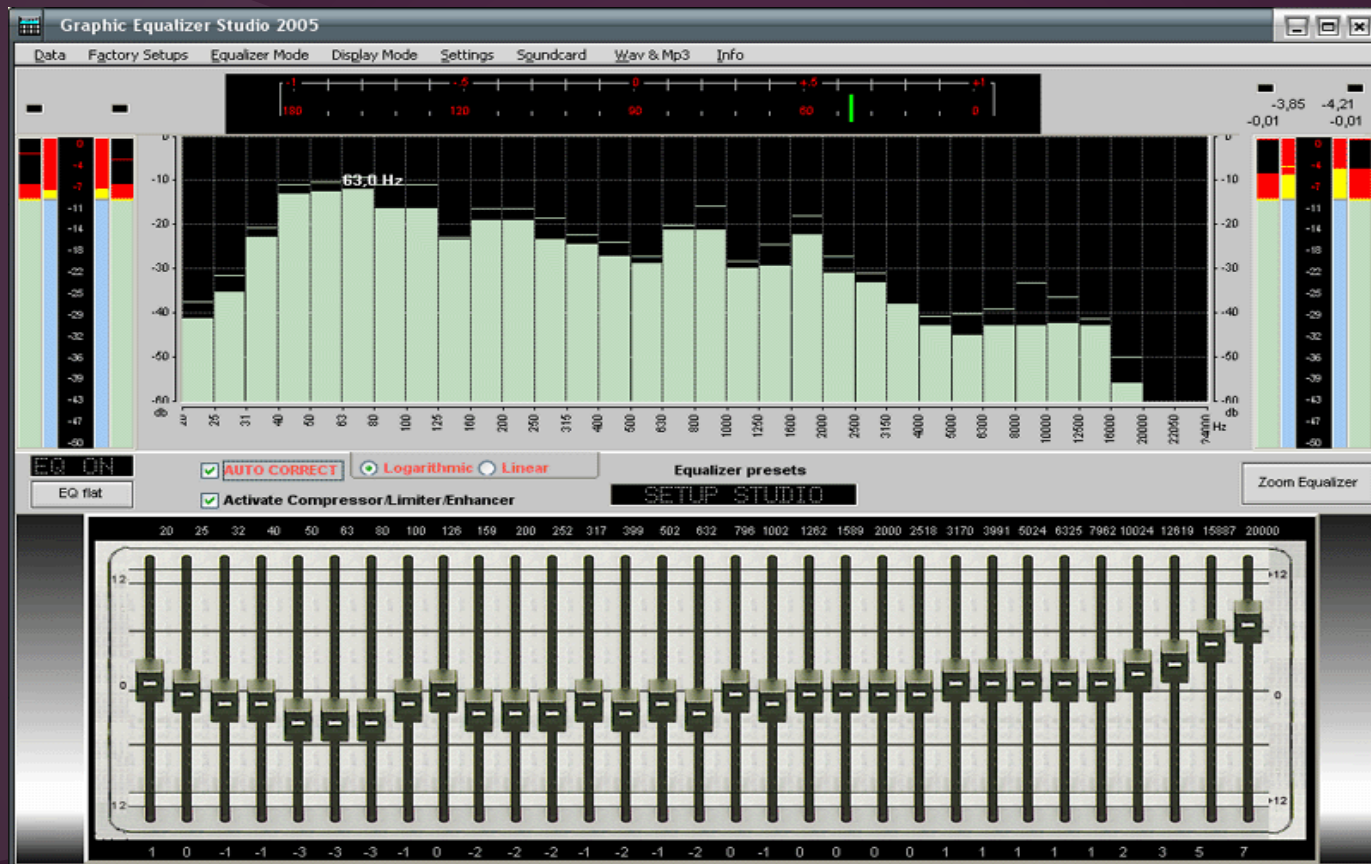


Simple Guide To Using Equalizers

Reuben Chng
www.audiomentor.com

Most EQs you'll find in video editors are parametric Equalizers



Bass

Lower end of sound you hear.

Think of a low sounding distant explosion

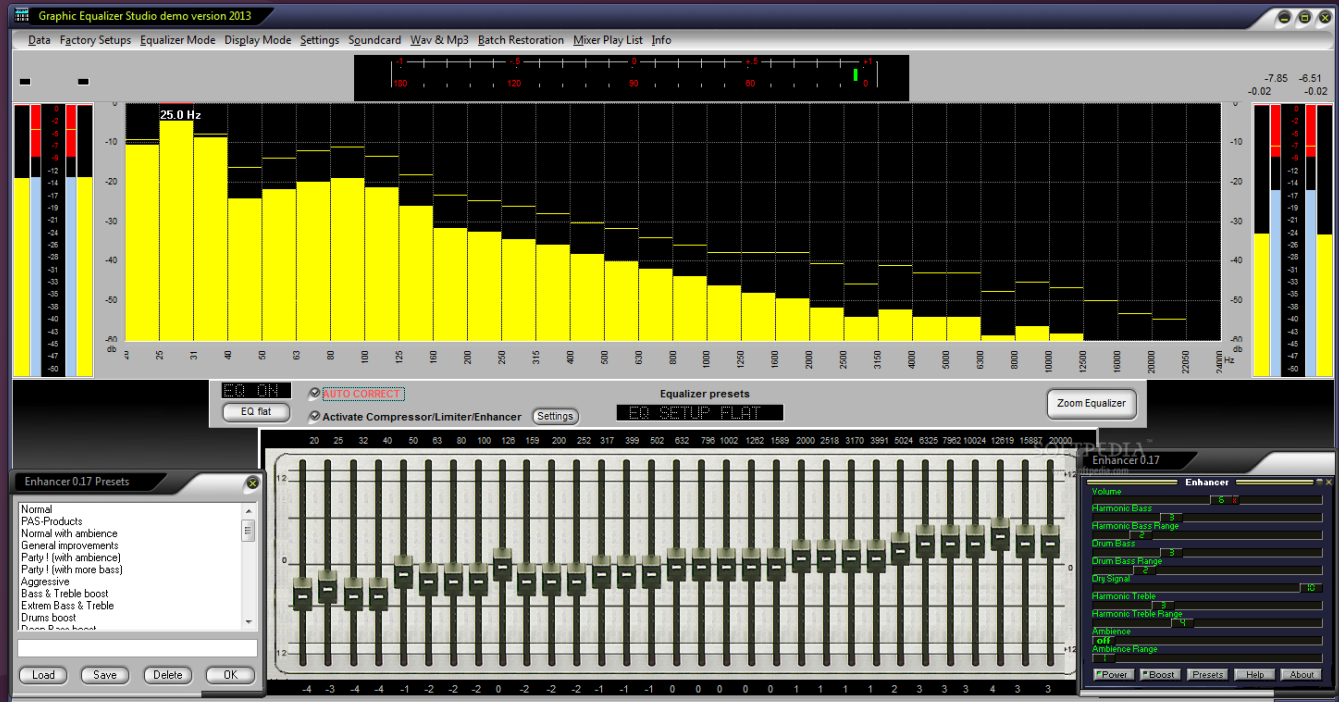
Treble

Brighter side of sound you hear.

Think the rinkling sound of glass smashing

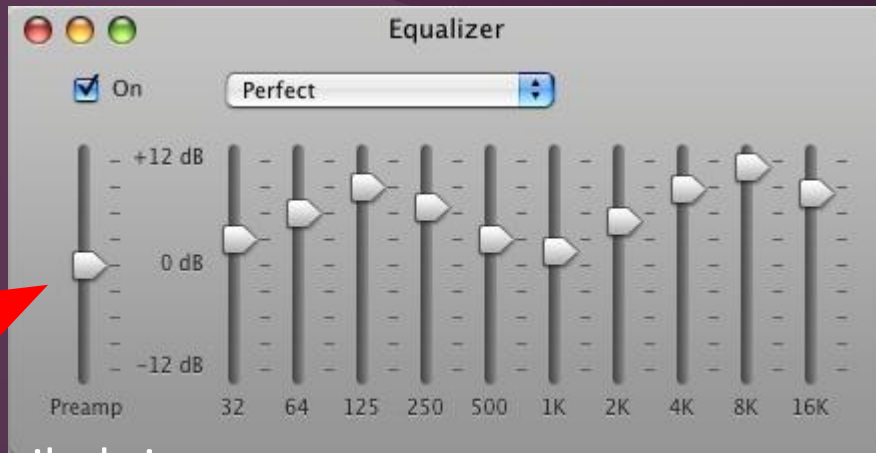
BASS

Treble



A different
type of EQ
table

Bass Mid Bass Mid
Treble Treble



We measure volume by 'dB' decibels in sound. Higher meaning boosting the volume and lower means the opposite

EQ Cheat Sheet

Frequency	What Is At That Range?
80 Hz	Kick Drum
150 - 300 Hz	Bass & muddiness
400 - 800Hz	Bass
1kHz	Male Voice
3kHz	Higher female voice
6kHz	Add brightness & clarity to voice
8kHz	Drum Cymbals
15kHz	Annoying bright sounds

Boost or cut frequencies.

For example if you find that the dialogues in your videos aren't prominent enough, you can try cutting off muddiness at 150hz and boosting the EQ at 6kHz.

Questions? Head to the forum

www.audiomentor.com/amforums

Or email me at

reuben@audiomentor.com